



# JEFFERSON

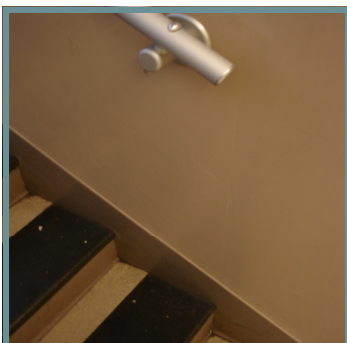
## ACCESSIBILITY SUMMARY



Jefferson High School  
5210 N. Kerby Avenue  
Portland, OR 97217

### SUMMARY

Jefferson has several additions that have been linked together through ramps and elevators. Many of the ramps do not meet current ADA requirements. The main ramp at front door and the ramp and doors to the cafeteria should be given priority, as well as access to gym support spaces. The elevators, ramps and lifts comprise the majority of the upgrade work. The major accessibility upgrades for Benson are summarized on this sheet. This handrail at Jefferson is a good example which illustrates handrails without required extensions, and inaccessible top surface obstructions.



Replace non-complaint handrail

### ACCESSIBILITY UPGRADES TO MEET 2008 ADA GUIDELINES

Site Elements	Additional accessible parking spaces, striping, and handrails at ramp leading down to accessible entrance
Accessible Route & Reach Ranges	Replacement handrails in one main stair Ramps modified to meet accessibility requirements Elevators and lifts to allow access to locker and activity rooms below the gym Lever hardware on doors Lift to access dance studios Elevator to access stage, band and choral rooms
Plumbing Elements	Accessible student restrooms to basement at cafeteria Locker room accessible showers and restrooms Accessible drinking fountains Accessible sinks and gases at science classrooms Accessible sinks at home economics classrooms
Communication Elements	Assisted listening devices at performance spaces using audio amplification Interior signage at upgraded accessible spaces
Special Spaces	Lowered counter at student services Lowered counter at vice principal office Additional wheelchair and companion seating at auditorium Lowered ticket counter and gym and auditorium
Built-In Elements	Lower work counters in home economics
Recreational Facilities	Benches at locker rooms and playing fields.

### COST BREAKDOWN

Cost information provided is based on 2009 estimated unit costs for direct construction including general contractor overhead. Additionally, estimated hard costs and soft costs provided by PPS have been included.

Site Elements	\$79,307
Accessible Route & Reach Ranges	\$1,019,036
Plumbing Elements	\$91,145
Communication Elements	\$28,872
Special Spaces	\$2,005
Built-In Elements	\$14,804
Recreational Facilities	\$4,555
Special Education	\$4,680
<b>Total</b>	<b>\$1,244,404</b>